

For more information on all our developments  
contact our Sales & Information Centre or visit  
[www.campbellhomes.co.uk](http://www.campbellhomes.co.uk)



...quality in life

**Huntsman Chase** Barnsley Road, Sheffield S5

Luxurious development of 1 & 2 bedroom apartments



CAMPBELL  
HOMES LTD

**Head Office:**

916 - 918 Herries Road  
Hillsborough  
Sheffield S6 1QW

**Tel: 0114 234 4669**

[sales@campbellhomes.co.uk](mailto:sales@campbellhomes.co.uk)  
[www.campbellhomes.co.uk](http://www.campbellhomes.co.uk)



CAMPBELL  
HOMES LTD



**Huntsman Chase**, stylish four storey development offers 1 & 2 bedroom apartments

...qualityinlife

...recognisable for our  
**distinctive** style  
quality and appealing living environments.



style



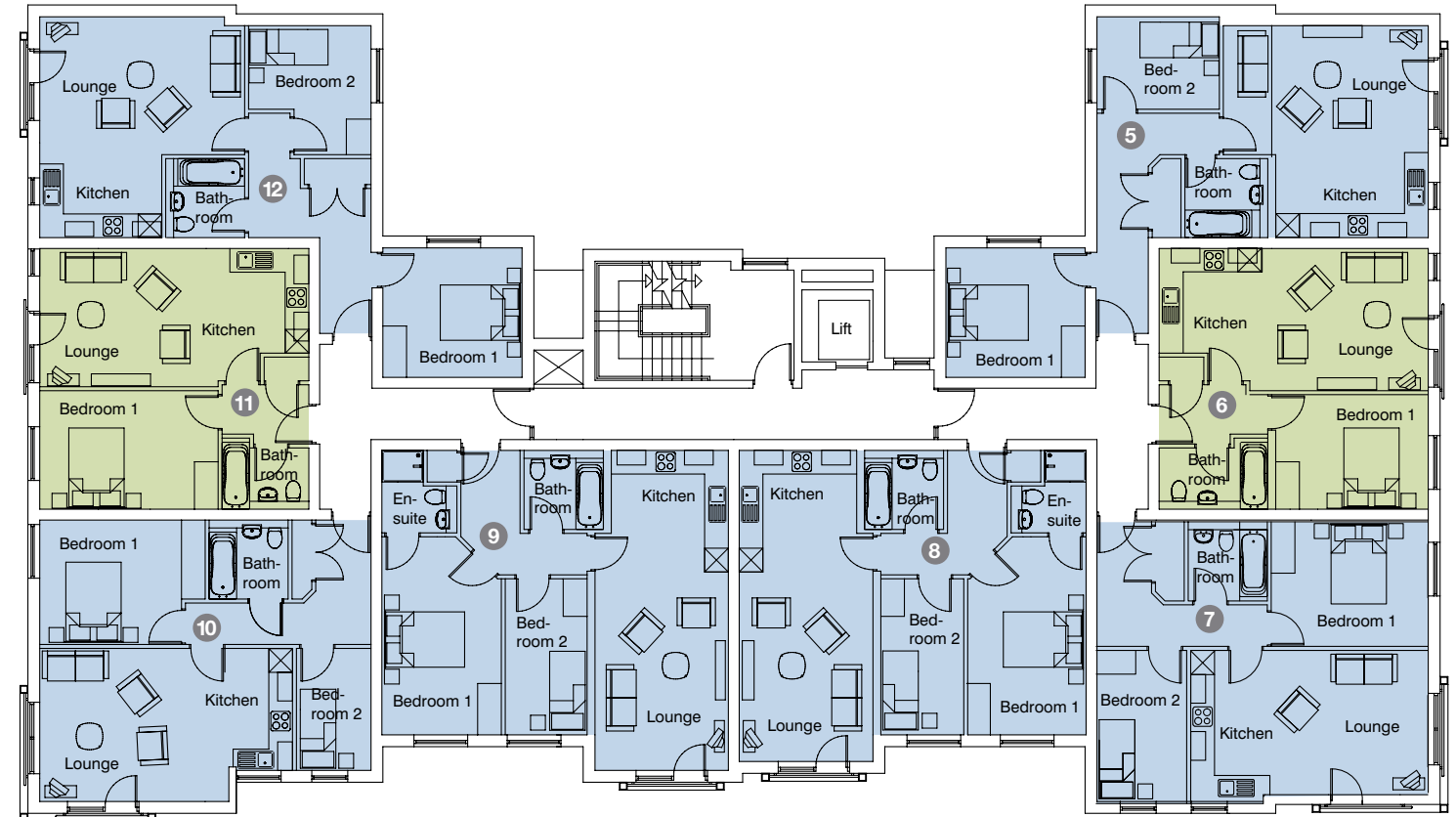
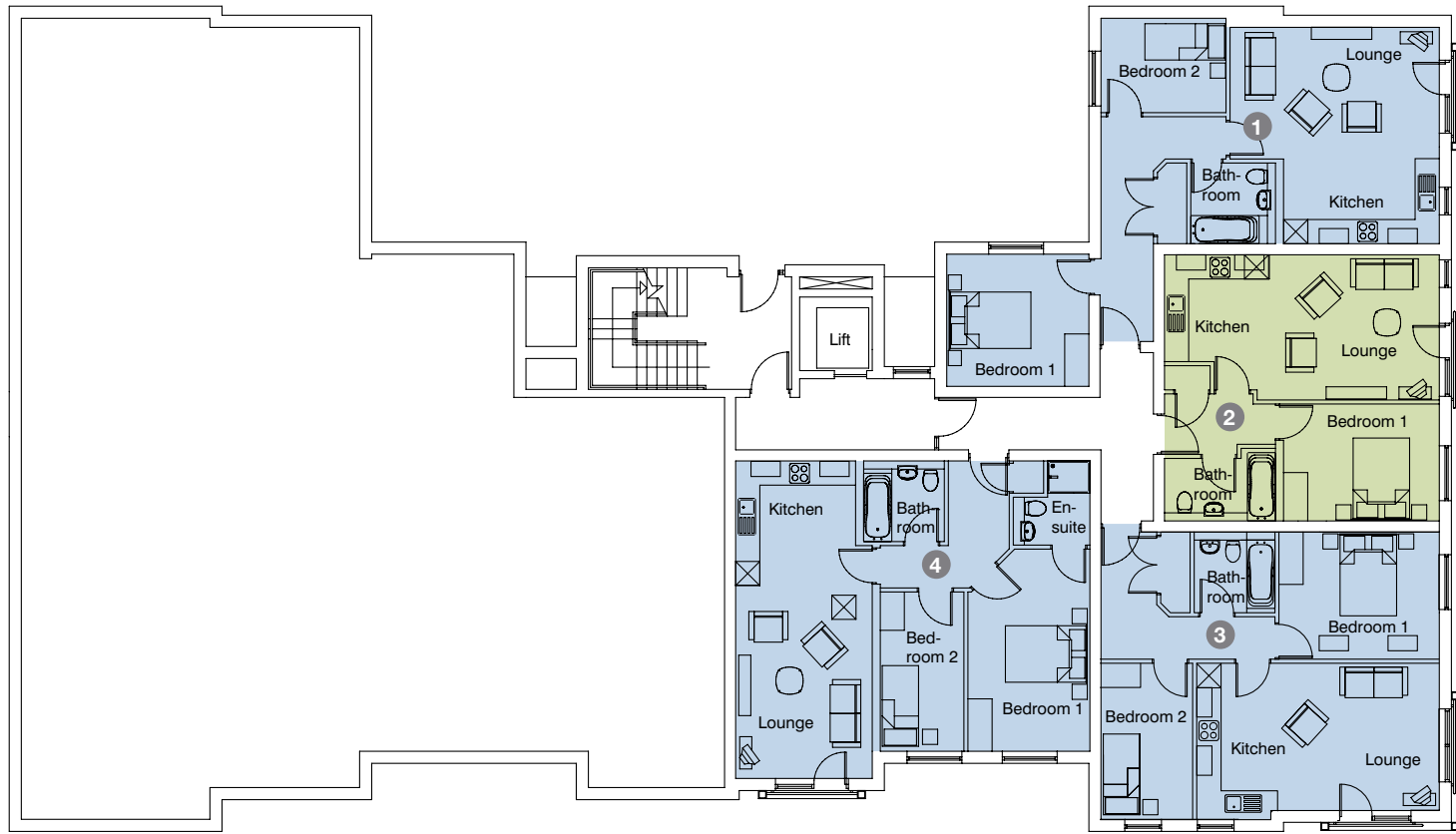
**Huntsman Chase is a very stylish development of just 24 apartments, built to an extremely high standard by a local builder, Premier registered.**

The four storey development offers 1 & 2 bedroom apartments which provide comfortable living accommodation for today's lifestyles. There is allocated car parking to each of the apartments.

The area is well served by public transport and you will find an array of shops & restaurants close by. Meadowhall shopping centre and Sheffield City centre can be easily reached.

...the grass is greener





■ 1 Bedroom Apartments ■ 2 Bedroom Apartments

■ 1 Bedroom Apartments ■ 2 Bedroom Apartments

## Ground Floor



■ **Apartment 1**

Lounge/Kitchen	5365mm x 5190/3863mm
Bedroom 1	3278mm x 3525mm
Bedroom 2	2340mm x 3100mm
Bathroom	2000mm x 2100mm

■ **Apartment 3**

Lounge/Kitchen	3875mm x 6000mm
Bedroom 1	3150mm x 3962mm
Bedroom 2	2200mm x 3875mm
Bathroom	2000mm x 2000mm

■ **Apartment 2**

Lounge/Kitchen	3600mm x 6815mm
Bedroom 1	2900mm x 3963mm
Bathroom	2752mm x 1900/1550mm

■ **Apartment 4**

Lounge/Kitchen	8100mm x 3388mm
Bedroom 1	5013mm x 2998mm
Bedroom 2	3950mm x 2100mm
Bathroom	2000mm x 2000mm
En-suite	1900mm x 2087mm

## First Floor

■ **Apartment 5**

Lounge/Kitchen	5365mm x 5190/3863mm
Bedroom 1	3278mm x 3525mm
Bedroom 2	2340mm x 3100mm
Bathroom	2000mm x 2100mm

■ **Apartment 6**

Lounge/Kitchen	3600mm x 6815mm
Bedroom 1	2900mm x 3963mm
Bathroom	2752mm x 1900/1550mm

■ **Apartment 7**

Lounge/Kitchen	3875mm x 6000mm
Bedroom 1	3150mm x 3962mm
Bedroom 2	2200mm x 3875mm
Bathroom	2000mm x 2000mm

■ **Apartment 8**

Lounge/Kitchen	8100mm x 3388mm
Bedroom 1	5013mm x 2998mm
Bedroom 2	3950mm x 2100mm
Bathroom	2000mm x 2000mm
En-suite	1900mm x 2087mm

■ **Apartment 9**

Lounge/Kitchen	8100mm x 3378mm
Bedroom 1	5013mm x 3025mm
Bedroom 2	3950mm x 2073mm
Bathroom	2000mm x 2010mm
En-suite	2087mm x 1900mm

■ **Apartment 10**

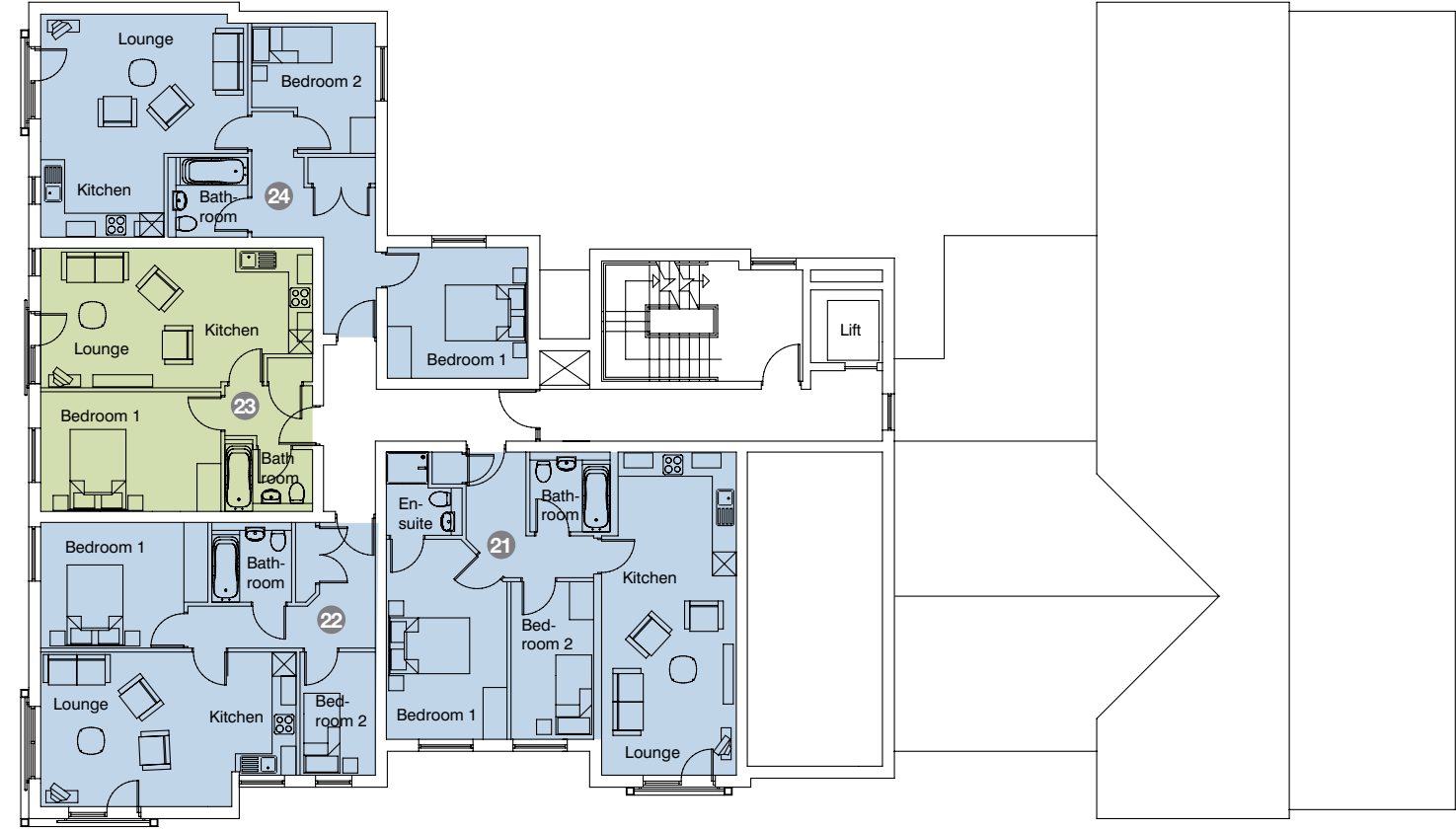
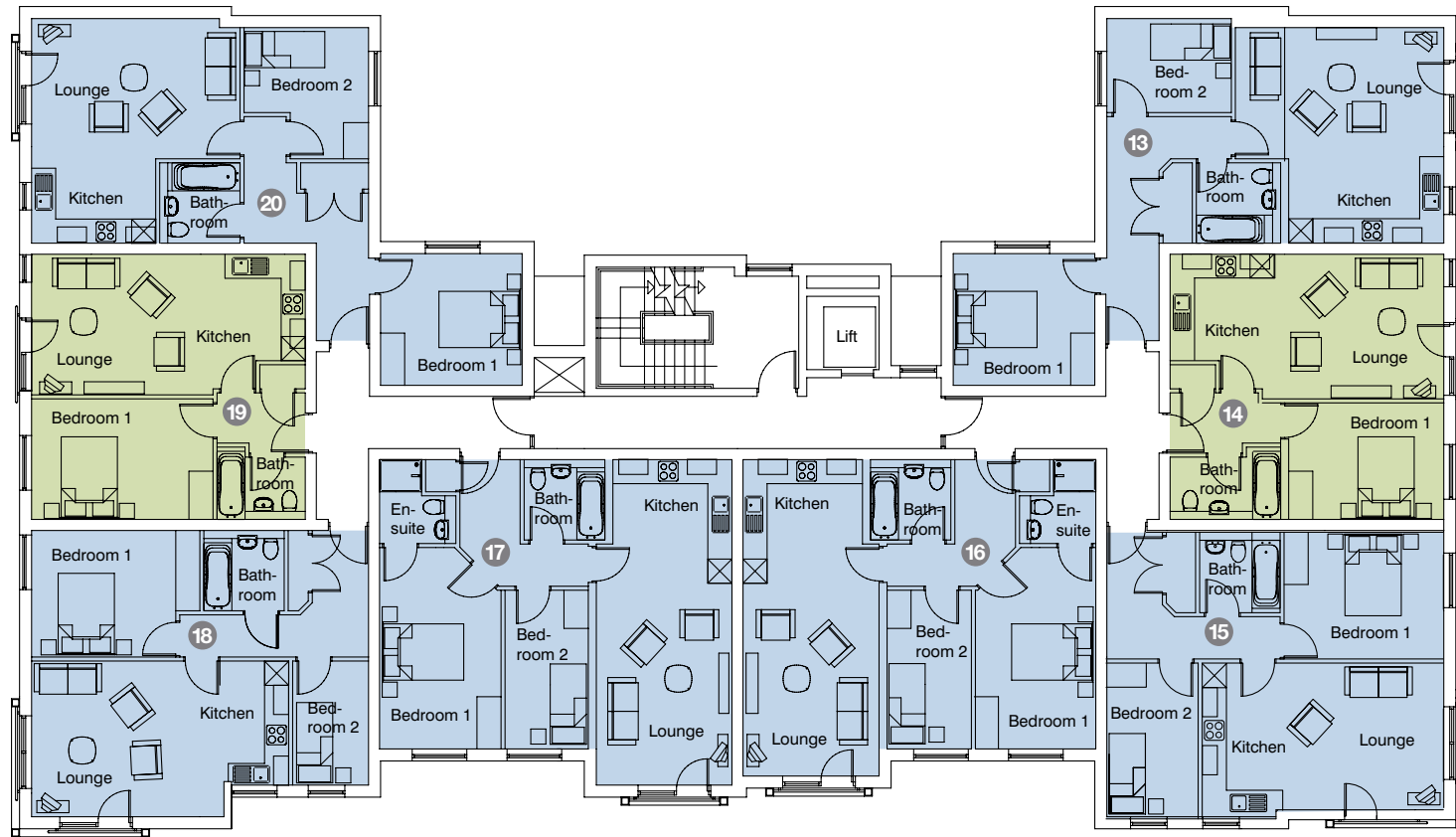
Lounge/Kitchen	3875mm x 6400mm
Bedroom 1	3150mm x 4190mm
Bedroom 2	3088mm x 1889mm
Bathroom	2000mm x 2000mm

■ **Apartment 11**

Lounge/Kitchen	3528mm x 6815mm
Bedroom 1	3000mm x 4518mm
Bathroom	2197mm x 1894/1550mm

■ **Apartment 12**

Lounge/Kitchen	5590mm x 5190/3090mm
Bedroom 1	3278mm x 3525mm
Bedroom 2	3265mm x 3100mm
Bathroom	2000mm x 2000mm



■ 1 Bedroom Apartments ■ 2 Bedroom Apartments

■ 1 Bedroom Apartments ■ 2 Bedroom Apartments

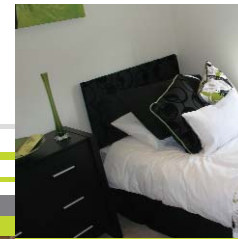
## Second Floor

<p><b>Apartment 13</b> Lounge/Kitchen 5365mm x 5190/3863mm Bedroom 1 3278mm x 3525mm Bedroom 2 2340mm x 3100mm Bathroom 2000mm x 2100mm</p>	<p><b>Apartment 14</b> Lounge/Kitchen 3600mm x 6815mm Bedroom 1 2900mm x 3963mm Bathroom 2752mm x 1900/1550mm</p>	<p><b>Apartment 15</b> Lounge/Kitchen 3875mm x 6000mm Bedroom 1 3150mm x 3962mm Bedroom 2 2200mm x 3875mm Bathroom 2000mm x 2000mm</p>	<p><b>Apartment 16</b> Lounge/Kitchen 8100mm x 3388mm Bedroom 1 5013mm x 2998mm Bedroom 2 3950mm x 2100mm Bathroom 2000mm x 2000mm En-suite 1900mm x 2087mm</p>	<p><b>Apartment 17</b> Lounge/Kitchen 8100mm x 3378mm Bedroom 1 5013mm x 3025mm Bedroom 2 3950mm x 2073mm Bathroom 2000mm x 2010mm En-suite 2087mm x 1900mm</p>	<p><b>Apartment 18</b> Lounge/Kitchen 3875mm x 6400mm Bedroom 1 3150mm x 4190mm Bedroom 2 3088mm x 1889mm Bathroom 2000mm x 2000mm</p>	<p><b>Apartment 19</b> Lounge/Kitchen 3528mm x 6815mm Bedroom 1 3000mm x 4518mm Bathroom 2197mm x 1894/1550mm</p>	<p><b>Apartment 20</b> Lounge/Kitchen 5590mm x 5190/3090mm Bedroom 1 3278mm x 3525mm Bedroom 2 3265mm x 3100mm Bathroom 2000mm x 2000mm</p>
---	---	--	---	---	--	---	---



## Third Floor

<p><b>Apartment 21</b> Lounge/Kitchen 8100mm x 3378mm Bedroom 1 5013mm x 3025mm Bedroom 2 3950mm x 2073mm Bathroom 2000mm x 2010mm En-suite 2087mm x 1900mm</p>	<p><b>Apartment 22</b> Lounge/Kitchen 3875mm x 6400mm Bedroom 1 3150mm x 4190mm Bedroom 2 3088mm x 1889mm Bathroom 2000mm x 2000mm</p>	<p><b>Apartment 23</b> Lounge/Kitchen 3528mm x 6815mm Bedroom 1 3000mm x 4518mm Bathroom 2197mm x 1894/1550mm</p>	<p><b>Apartment 24</b> Lounge/Kitchen 5590mm x 5190/3090mm Bedroom 1 3278mm x 3525mm Bedroom 2 3265mm x 3100mm Bathroom 2000mm x 2000mm</p>
---	--	---	---



# Site development plan



## ...apartment information



### Specification

- Oven, Hob & Extractor Fan
- Fridge
- Freezer
- Washer Dryer
- Dishwasher
- Shower to all Apartments
- Splash Back to Kitchen
- Tiling to Bathroom & En-Suite
- Alarm System & Door Entry
- Telephone System
- Smoke Detectors
- Satellite & TV Points to Lounge & Bed 1
- Lift to all Floors
- Lighting to Complex
- Carpet to Communal Hallway
- Landscaped Gardens

Why not personalise your new home with the many extras Campbell Homes can offer. Please see our Sales Advisor for further information.

### Important Notice

ALL ITEMS OF SPECIFICATION MAY VARY OR BE ALTERED WITHOUT PRIOR NOTICE AT THE DEVELOPER'S DISCRETION.

All illustration plans and specifications are for guidance only and for further information please do not hesitate to contact us at Campbell Homes.

### Local Amenities

Sheffield City Council Tel: 0114 272 64444

#### Hospitals

Northern General Tel: 0114 243 4343  
Royal Hallamshire Tel: 0114 226 1000

#### Transport

Railway Tel: 0845 74884950  
Travel Line Tel: 0871 2002233

#### Water

Yorkshire Water Tel: 0845 1242424

#### Library

Ecclesfield, 129a High St Tel: 0114 2727713

#### Police

South Yorkshire Police, Ecclesfield  
Tel: 0114 2202020

For maintenance, insurance & ground rent charges please call Campbell Homes on  
Tel: 0114 234 4669

These particulars are for information purposes only and do not in whole or part constitute or form part of any offer or contract nor should any statement contained herein be relied upon as a statement or representation of fact. Neither Campbell Homes Limited, the selling Agent, nor any Director in or employee of the selling Agents accept liability or responsibility for any statement contained herein. Campbell Homes Limited does not hereby make or give nor does any director in or employee have any authority to make or give representation or warranty whatsoever as regards the property or otherwise. Any prospective purchaser or lessee or other person in any way interested in the property should satisfy himself by inspection or otherwise as to the correctness of each statement in these particulars. These dimensions are accurate to within +/-50mm. They are not intended to be used for carpets sizes, appliance spaces or items of furniture.